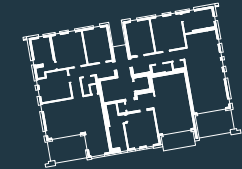
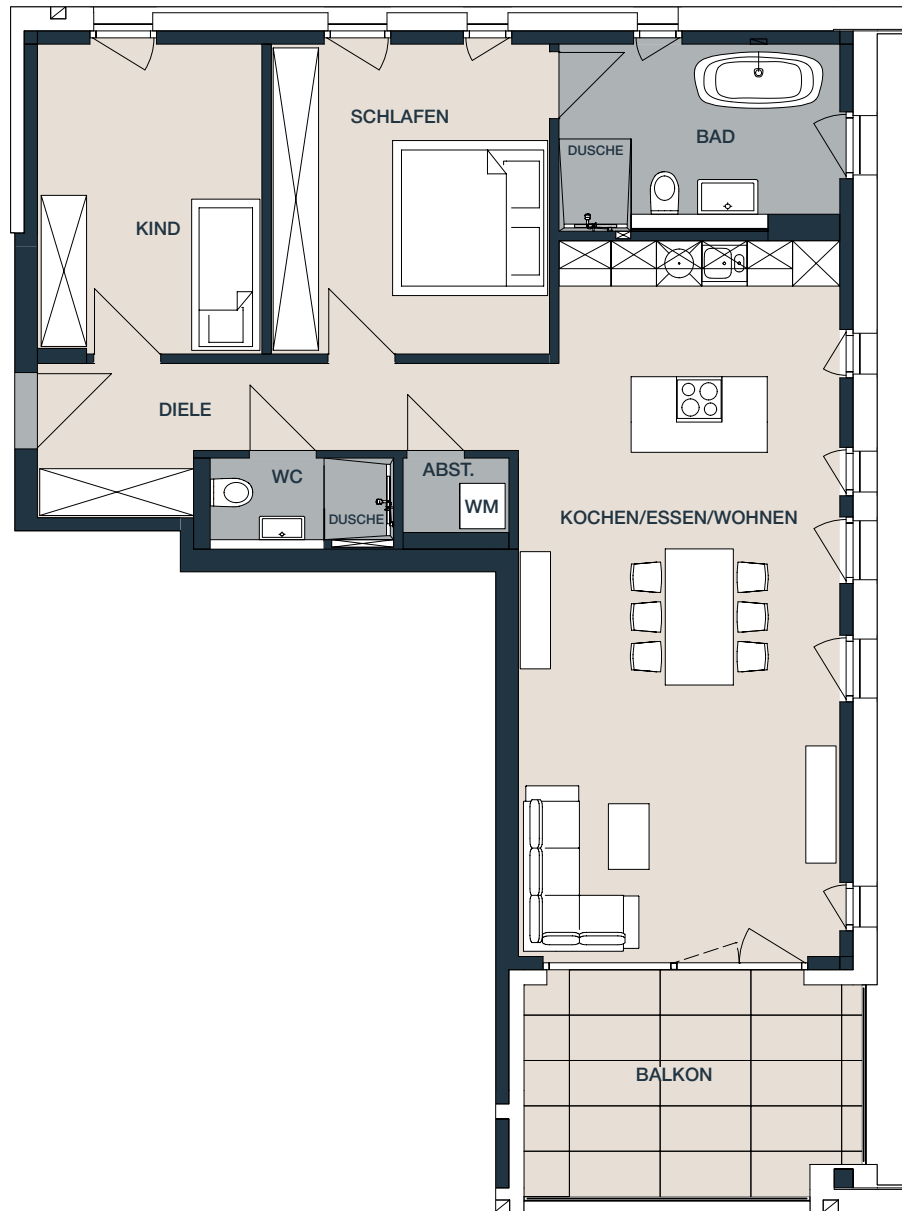


# W2.06

OBERGESSCHOSS

3 ZIMMER

BALKON



Bereich		Wohnfläche
Abst.		1.33 m <sup>2</sup>
Bad		8.76 m <sup>2</sup>
Diele		8.14 m <sup>2</sup>
Kind 1		12.02 m <sup>2</sup>
Kochen/Essen/Wohnen		40.02 m <sup>2</sup>
Schlafen		15.01 m <sup>2</sup>
WC		2.71 m <sup>2</sup>
Terrasse 12.20 m <sup>2</sup>	50%	6.10 m <sup>2</sup>
<b>WOHNFLÄCHE TOTAL</b>		<b>94.09 m<sup>2</sup></b>

Keller	2.6	6.02 m <sup>2</sup>
--------	-----	---------------------

Wohnung	2.06
---------	------

Pkw - Stellplatz	9
------------------	---

